



## Cargo cranes

TTS cargo cranes are designed for a wide variety of lifting applications. The range comprises standard and special designs with SWL exceeding more than 200 tonnes, either as a single lift or twin crane format. The cranes are designed and built to meet all ILO and other relevant authority requirements, and can be certified by any recognised classification society. TTS cargo cranes are designed for heavy-duty, continuous use in tough marine environments. All components and materials are carefully selected to ensure long and trouble-free operation.

**Basic design features**

- Welded box boom for low maintenance. Stiff, rigid design with reduced flexibility, enables operator to position cargo faster and more accurately
- Self contained unit with integrated hydraulic power pack
- Failsafe brakes on all movements
- Fully enclosed and equipped driver's cabin with heating
- Dual pump system with separate hydraulic circuit for hoist and luffing/slewing to ensure efficient cargo handling
- Variable speed hoist automatically adjusts to highest possible speed for the load.

**Standard equipment**

- Complete crane and equipment according to requirements from the specified classification society and flag state to ensure safe operation
- Pedestal of standard height ready for mounting and welding to vessel's main steel structure
- Electric starter equipment
- Floodlights mounted on jib
- Oil cooler for continuous use
- Limit switches for automatic stop of hook travel in top and bottom position
- Entire steel structure made of certified steel and sandblasted to Sa 2.5 prior to painting

- Full two-component epoxy/ acrylic paint system of highest marine standard. Owner's choice of colour
- All platforms and ladders are hot dip galvanised
- Full set of documentation and operation manual
- Hand operated pump for release of brake on winch and slewing gear
- Spare filters for one year normal operation.

- Load indicator
- Air conditioned cabin
- Extended pedestal height
- Heavy lift brackets allowing different reevings and SWL for different outreaches
- Cargo gear certificate issued by any class society.

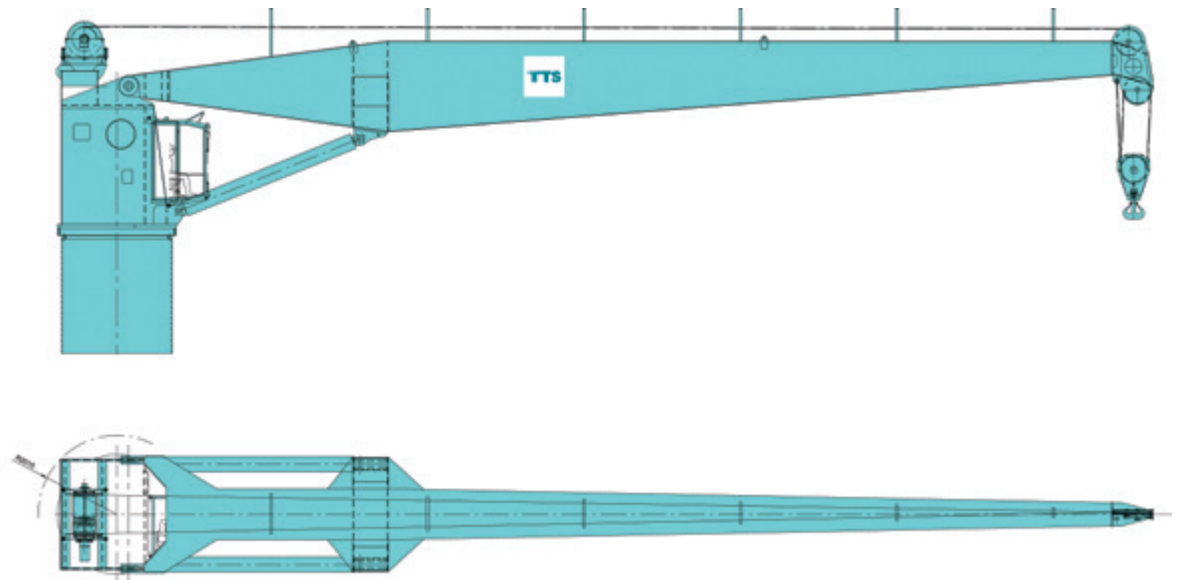
**Optional designs**

- Telescopic boom
- Knuckle boom
- Win jib head with two independently operated winches
- Twin cranes.

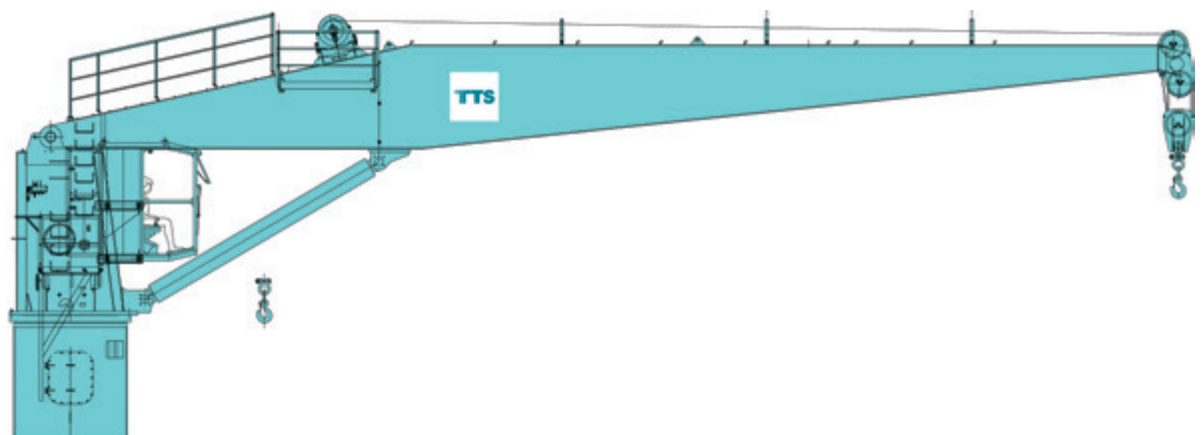
**Optional equipment**

- Certification for personnel transfer
- Remote control
- Stabilising winches
- Power swivel hook

Type CCL



Type GPC



Standard data for general purpose cargo cranes Type CCL									
Cranes			Performance			Main dimensions			Crane weight
Size tm	Swl t	Max outreach m	Hoist speed m/min	Luff. time sec	Slew speed rpm	H2 mm	H3 mm	D mm	Approx ton
1250	20	33.5	25.5/62	54	0.8	3700	1600	2530	49
1600		41	25.5/62	63	0.8	3800	1650	2840	61
1250	25	30	20/55	54	0.8	3700	1600	2530	47
1600		36	20/55	63	0.8	3800	1650	2840	59
2000		43	20/55	82	0.7	3900	1700	3120	68
1250	30	25.5	17/42	54	0.8	3700	1600	2530	45
1600		32	17/42	63	0.8	3800	1600	2840	56
2000		38.5	17/42	82	0.7	3900	1650	3120	64
2500		45	17/42	99	0.7	4200	1700	3570	85
1250	35	23.5	13/35	54	0.8	3700	1600	2530	43
1600		29	13/35	63	0.8	3800	1600	2840	54
2000		35	13/35	82	0.7	3900	1650	3120	62
2500		41	13/35	99	0.7	4200	1700	3570	81
1250	40	21.5	12.5/32	54	0.8	3700	1600	2530	42
1600		25.5	12.5/32	63	0.8	3800	1600	2840	51
2000		32	12.5/32	82	0.7	3900	1650	3120	60
2500		38	12.5/32	99	0.7	4200	1700	3570	78
1250	45	19.5	10/25	54	0.8	3700	1600	2530	41
1600		24	10/25	63	0.8	3800	1600	2840	50
2000		29	10/25	82	0.7	3900	1650	3120	57
2500		38	10/25	99	0.7	4200	1700	3570	76
1250	50	17.5	10/25	54	0.8	3700	1600	2530	39
1600		22	10/25	63	0.8	3800	1600	2840	49
2000		26.5	10/25	82	0.7	3900	1650	3120	55
2500		32	10/25	99	0.7	4200	1700	3570	73

Total weight of crane includes all equipment except base column. Actual weights can vary by ±10%.

Speeds are selected to leave sufficient pump capacity to operate another movement simultaneously, without significant speed reduction.

**Power requirements**

Common to all cranes:

- Rating: 230 kW S1 – 100%
- 342 kW S6 – 40%
- 350 kW peak load
- Current: 440V 60H
- 535A at S6-40%
- 840A starting current.

Standard data for general purpose cargo cranes Type GPC										
Cranes			Performance			Power requirement	Main dimensions			Crane weight
Size tm	Swl t	Max outreach m	Hoist speed m/min	Luff. time sec	Slew speed rpm	S6-40% kw	H2 mm	H3 mm	Inside mm	Approx ton
410	10.0	-24	25/50	75	0.8	125	2635	1880	1780	20
530		-28		85	0.7		2965	2020	2035	25
410	15.0	-17	20/40	50	1.5	150	2635	1880	1780	15
530		-21		60	1.1		2965	2020	2035	20
680		-28		70	0.9		3345	2210	2010	23
735		-30		75	0.8		3360	2210	2010	26
835		-32		90	0.9		3585	2340	2210	28
410	20.0	-13	12,5/25	40	1.9	150	2635	1880	1780	16
530		-16		50	1.3		2965	2020	2035	19
680		-21		55	1.2		3345	2210	2010	20
735		-23		60	1		3360	2210	2010	24
835		-25		85	0.9		3584	2340	2210	28
900		-27		85	0.9		3585	2340	2210	32
680	25.0	-16	10/20	45	1.5	150	3345	2210	2010	23
735		-18		60	1		3360	2210	2010	26
835		-20		85	0.9		3585	2340	2210	28
900		-22		85	0.9		3585	2340	2210	29
735	30.0	-15	10/20	60	1	184	3360	2210	2010	25
835		-17		85	0.9		3585	2340	2210	27
900		-20		85	0.9		3585	2340	2210	28



TTS designs and supplies a large range of standard cargo cranes, and the standardisation itself works to minimise costs. However, where a special design is required, we are highly experienced in tailor-making cranes to comply with practically

all types of special requirements. Requests for special applications are always welcomed and are dealt with by our well-qualified staff of crane engineers.

